

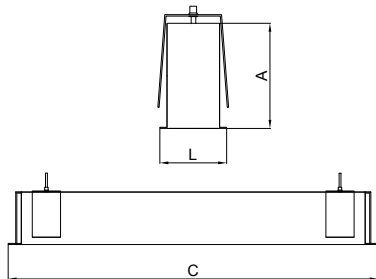


# Technical Data Sheet

## TPHLB 03 24014-O8 DE 12000lm



### PRODUCT DESCRIPTION



**APPLICATION:** Offices, meeting rooms  
Shops, commercial areas.  
General-purpose areas, with no specific risks  
Public areas, corridors  
Ceiling recessed luminaire

**MATERIALS EXECUTION:** Extruded anodized aluminium profile body.  
Fixing brackets supplied with the luminaire.

**MAINS SUPPLY AND WIRING:** Voltage and frequency supply of the luminaire (230V at 50Hz).  
Luminaire wired with electronic driver.  
Luminaire suitable for looping-in connection.

**ACCESSORIES:** Aluminium end-cap.

**OPTIONS:** Luminaire wired with electronic driver for dimming, Luminaire equipped with emergency kit 1H.

### TECHNICAL DATA

|                              | Luminous Flux (Lm) | System Power (W) | Luminous Efficacy (lm/W) | LED Risk Group | Colour Temp. (K) | UGR                      |       | Dimensions (mm) |       |        |          |          |
|------------------------------|--------------------|------------------|--------------------------|----------------|------------------|--------------------------|-------|-----------------|-------|--------|----------|----------|
|                              |                    |                  |                          |                |                  | (X= 4H; Y= 8H; S= 0,25H) |       | Length          | Width | Height | Fixation | Recessed |
|                              |                    |                  |                          |                |                  | Tran.                    | Long. |                 |       |        |          |          |
| TPHLB 03 24014-O8 DE 12000lm | 6756               | 80,08            | 84                       | 1              | 4000             | 17.4                     | 22.3  | 2326            | 59    | 110    | n/a      | 2319x52  |

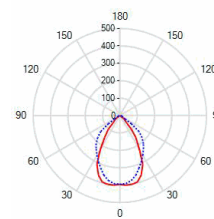
### OTHER TECHNICAL INFORMATION

CRI: > 80

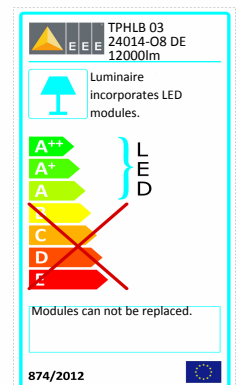
Photometric Code: 840/349

Lifetime Factor (L80B10) @ Ta=25°C: 50.000 h

### POLAR DIAGRAM



### ENERGY LABEL



### NORMS

EN 60598-1, EN 55015, EN 61000-3-2, EN 61547, EN 60598-2-2, 2014/30/EU, 2014/35/EU, 2011/65/EU (Rohs), (EU) N° 1194/2012 (Ecodesign)