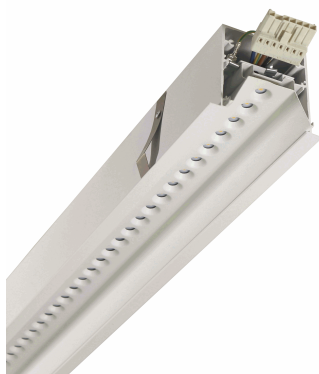
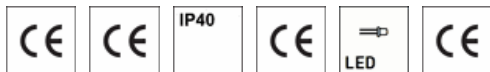




Technical Data Sheet

LTPPL1-MFI 02 23014-5D DE 5816lm RALT 9016



PRODUCT DESCRIPTION

APPLICATION: Offices, meeting rooms
Shops, commercial areas.
General-purpose areas, with no specific risks
Ceiling recessed luminaire
Luminaire for continuous line

MATERIALS EXECUTION: Lacquered and anodized aluminium profile body.
Fixing brackets supplied with the luminaire.
Die-cast aluminum end-caps.
White Textured/ RALT 9016
Luminaire with ≤ 19 UGR (Unified Glare Ratio)
LMO - Linear Micro Optics®. Coated linear micro optics with a reflector.

MAINS SUPPLY AND WIRING: Voltage and frequency supply of the luminaire (230V at 50Hz).
5 modules electrified conductors 1.5 mm² and 7 quick-connect terminals.
Luminaire wired with electronic driver.

ACCESSORIES

OPTIONS: Luminaire wired with electronic driver for dimming, Luminaire equipped with emergency kit 1H.

TECHNICAL DATA

	Luminous Flux (lm)	System Power (W)	Luminous Efficacy (lm/W)	LED Risk Group	Colour Temp. (K)	UGR		Dimensions (mm)				
						(X= 4H; Y= 8H; S= 0,25H)		Length	Width	Height	Fixation	Recessed
						Tran.	Long.					
LTPPL1-MFI 02 23014-5D DE 5816lm	4839	38.28	126	0	4000	17,8	20,4	2254	88	75	n/a	2250 x 78

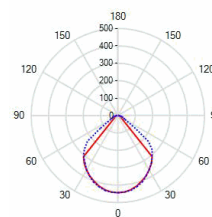
OTHER TECHNICAL INFORMATION

CRI: > 80

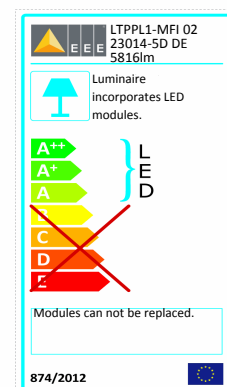
Photometric Code: 840/xxx

Lifetime Factor (L80B10) @ Ta=25°C: 50.000 h

POLAR DIAGRAM



ENERGY LABEL



NORMS

EN 60598-1, EN 55015, EN 61000-3-2, EN 61547, EN 60598-2-2, 2014/30/EU, 2014/35/EU, 2011/65/EU (Rohs), (EU) N° 1194/2012 (Ecodesign)