



PRODUCT DESCRIPTION



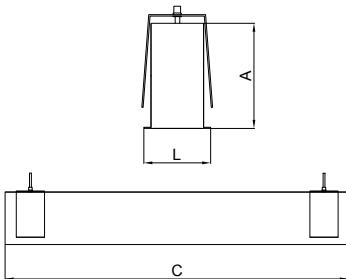
APPLICATION: Offices, meeting rooms
Shops, commercial areas.
General-purpose areas, with no specific risks
Public areas, corridors
Ceiling recessed luminaire
Luminaire for continuous line

MATERIALS EXECUTION: Extruded anodized aluminium profile body.
Fixing brackets supplied with the luminaire.
Parabolic reflectors anodized specular aluminum high yield, with high coefficient of reflection and without iridescence

MAINS SUPPLY AND WIRING: Voltage and frequency supply of the luminaire (230V at 50Hz).
Luminaire wired with electronic driver.
Luminaire suitable for looping-in connection.

ACCESSORIES: Aluminium end-cap.

OPTIONS: Luminaire wired with electronic driver for dimming, Luminaire equipped with emergency kit 1H.



TECHNICAL DATA

	Luminous Flux (Lm)	System Power (W)	Luminous Efficacy (lm/W)	LED Risk Group	Colour Temp. (K)	UGR		Dimensions (mm)				
						(X= 4H; Y= 8H; S= 0,25H)		Length	Width	Height	Fixation	Recessed
						Tran.	Long.					
LTPHLB 03 15014-O8 DE 7500lm	4373	50,05	87	1	4000	16.6	22.1	1445	59	110	n/a	1445x52

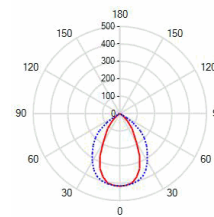
OTHER TECHNICAL INFORMATION

CRI: > 80

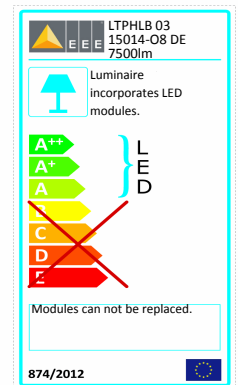
Photometric Code: 840/349

Lifetime Factor (L80B10) @ Ta=25°C: 50.000 h

POLAR DIAGRAM



ENERGY LABEL



NORMS

EN 60598-1, EN 55015, EN 61000-3-2, EN 61547, EN 60598-2-2, 2014/30/EU, 2014/35/EU, 2011/65/EU (Rohs), (EU) N° 1194/2012 (Ecodesign)