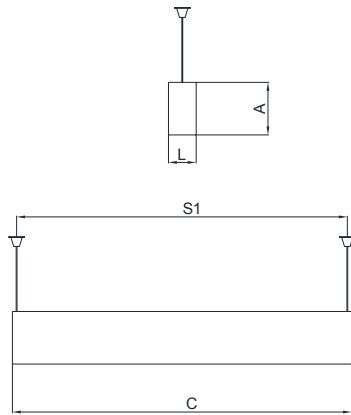
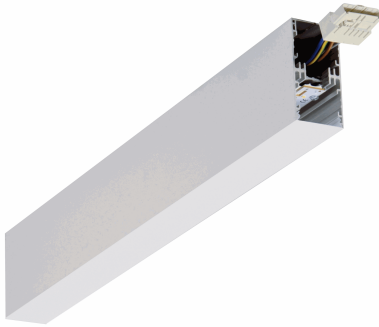
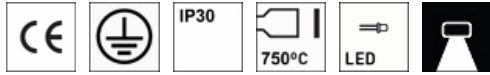




# Technical Data Sheet

## LPHLNO 03 24014-O7 DE 6000lm



### PRODUCT DESCRIPTION

**APPLICATION:** Offices, meeting rooms  
Shops, commercial areas.  
General-purpose areas, with no specific risks  
Suspended luminaire  
Luminaire for continuous line

**MATERIALS EXECUTION:** Extruded anodized aluminium profile body.  
Sandblasted semi-opal polycarbonate diffuser and opal acrylic film.

**MAINS SUPPLY AND WIRING:** Voltage and frequency supply of the luminaire (230V at 50Hz).  
Luminaire wired with electronic driver.  
5 modules electrified conductors

**ACCESSORIES:** FA 500 mm, FA 1000 mm, SIS 500 mm, SIS 1000 mm, FA 1500 mm, FA-AN 500 mm, SIS 1500 mm, SIS-AN 500 mm, FA-AN 1000 mm, FA-AN 1500 mm, SIS-AN 1000 mm, SIS-AN 1500 mm, FAC 500 mm, FAC 1000 mm, SISL-AN 500mm, SISL-AN 1000mm, FAC 1500 mm, FAC-AN 500 mm, SISL-AN 1500mm, FAC-AN 1000 mm, FAC-AN 1500 mm, Corner PHLNO 03 04014-O7 DE 1500lm, Corner PHLNO 03 04014-O8 DE 3000lm, Mains connector (female), Aluminium end-cap.

**OPTIONS:** Luminaire wired with electronic driver for dimming, Black / RAL 9005 (on request), White/ Ral 9016 (on request).

### TECHNICAL DATA

	Luminous Flux (Lm)	System Power (W)	Luminous Efficacy (lm/W)	LED Risk Group	Colour Temp. (K)	UGR		Dimensions (mm)				
						(X= 4H; Y= 8H; S= 0,25H)		Length	Width	Height	Fixation	Suspension
						Tran.	Long.					
LPHLNO 03 24014-O7 DE 6000lm	2928	40,48	72	1	4000	15.0	19.9	2312	47	93	n/a	2309

### OTHER TECHNICAL INFORMATION

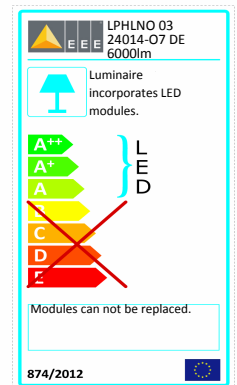
CRI: > 80

Photometric Code: 840/349

Lifetime Factor (L80B10) @ Ta=25°C: 50.000 h

### POLAR DIAGRAM

### ENERGY LABEL



### NORMS

EN 60598-1, EN 55015, EN 61000-3-2, EN 61547, 2014/30/EU, 2014/35/EU, 2011/65/EU (Rohs), (EU) N° 1194/2012 (Ecodesign), EN 60598-2-1