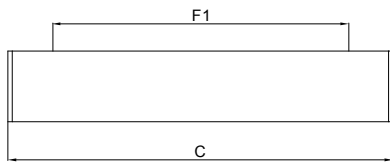
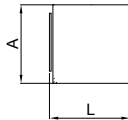
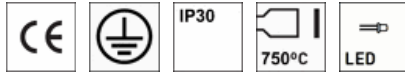




# Technical Data Sheet

## APMLZ 01 12014-O7 DE 3000lm



### PRODUCT DESCRIPTION

**APPLICATION:** Shops, commercial areas.  
General-purpose areas, with no specific risks  
School boards, showrooms  
Public areas, corridors  
Wall surface-mounted luminaire.

**MATERIALS EXECUTION:** Extruded anodized aluminium profile body.  
Die-cast aluminum end-caps.  
Opal acrylic diffuser

**MAINS SUPPLY AND WIRING:** Voltage and frequency supply of the luminaire (230V at 50Hz).  
Luminaire wired with electronic driver.

### ACCESSORIES

**OPTIONS:** Luminaire wired with electronic driver for dimming, Luminaire with emergency unit.

### TECHNICAL DATA

	Luminous Flux (Lm)	System Power (W)	Luminous Efficacy (lm/W)	LED Risk Group	Colour Temp. (K)	UGR		Dimensions (mm)				
						(X= 4H; Y= 8H; S= 0,25H)		Length	Width	Height	Fixation	Suspension
						Tran.	Long.	C	L	A	F1	S1
APMLZ 01 12014-O7 DE 3000lm	1641	20,24	81	1	4000	22.4	22.6	1136	99	89	831	n/a

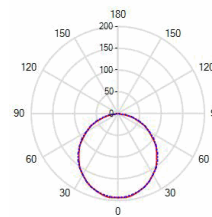
### OTHER TECHNICAL INFORMATION

CRI: > 80

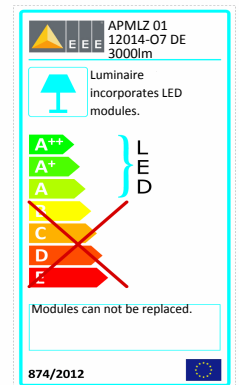
Photometric Code: 840/349

Lifetime Factor (L80B10) @ Ta=25°C: 50.000 h

### POLAR DIAGRAM



### ENERGY LABEL



### NORMS

EN 60598-1, EN 55015, EN 61000-3-2, EN 61547, 2014/30/EU, 2014/35/EU, 2011/65/EU (Rohs), (EU) N° 1194/2012 (Ecodesign)