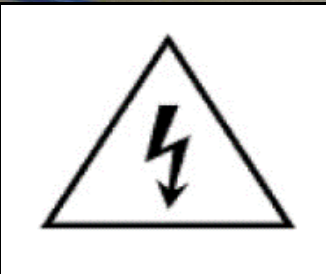
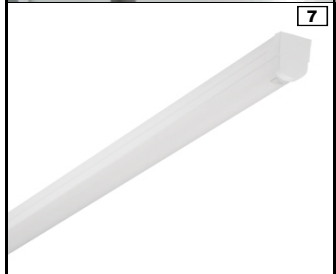
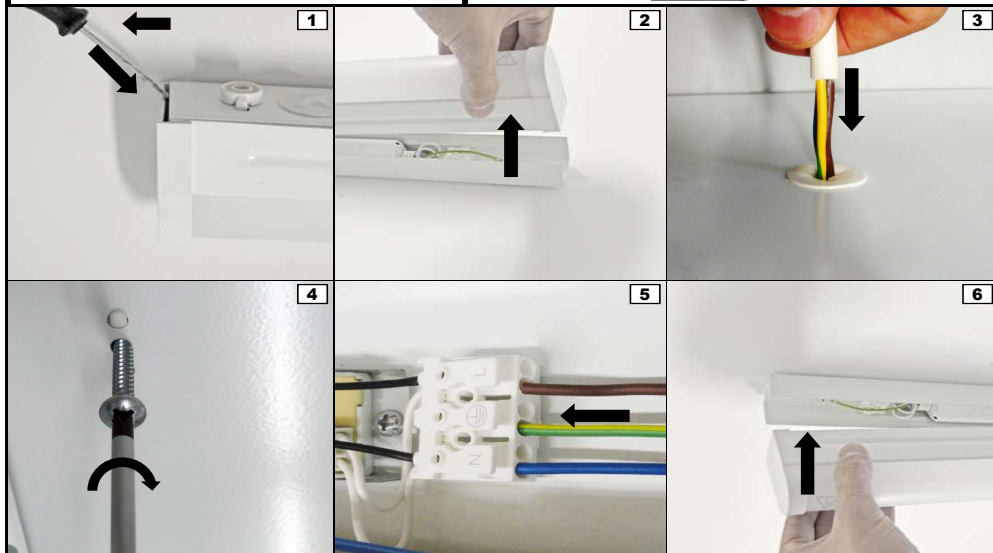
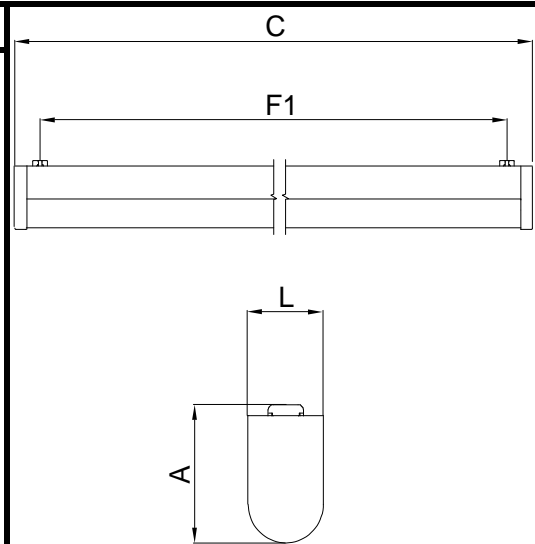
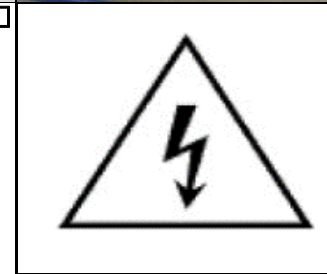
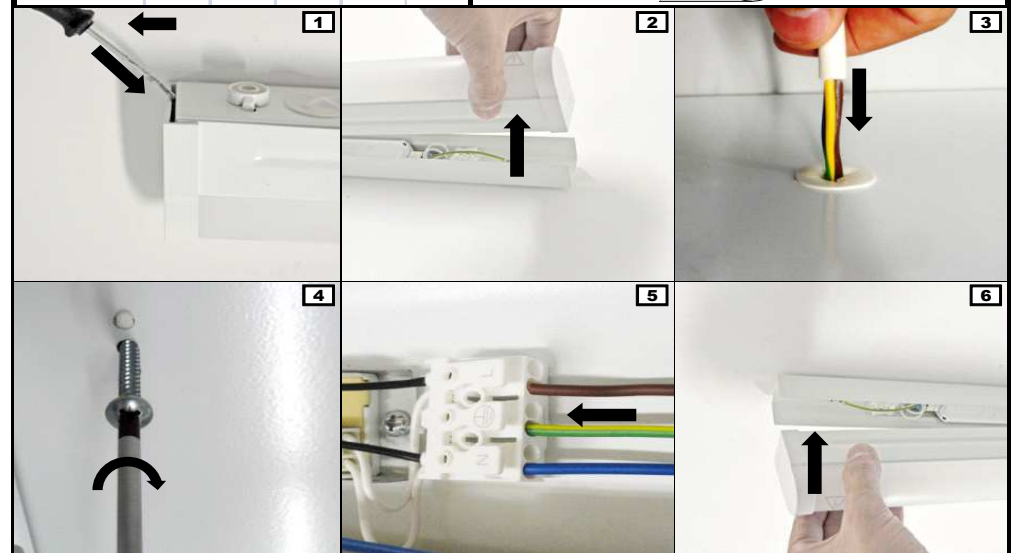
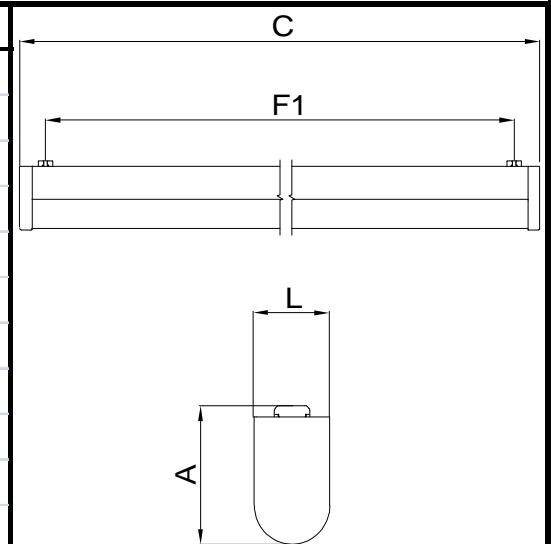


	C	L	A	F1
0601	584	42	71	529
1201	1174	42	71	1119
1501	1474	42	71	1419



PT - Atenção, perigo de choque elétrico.  
 EN - Caution, risk of electric shock.  
 FR - Attention, risque de choc électrique.  
 ES - Precaución, riesgo de descarga eléctrica.  
 DE - Vorsicht, Gefahr eines elektrischen Schlags.

	C	L	A	F1
0601	584	42	71	529
1201	1174	42	71	1119
1501	1474	42	71	1419



PT - Atenção, perigo de choque elétrico.  
 EN - Caution, risk of electric shock.  
 FR - Attention, risque de choc électrique.  
 ES - Precaución, riesgo de descarga eléctrica.  
 DE - Vorsicht, Gefahr eines elektrischen Schlags.