
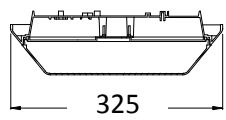
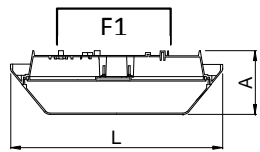
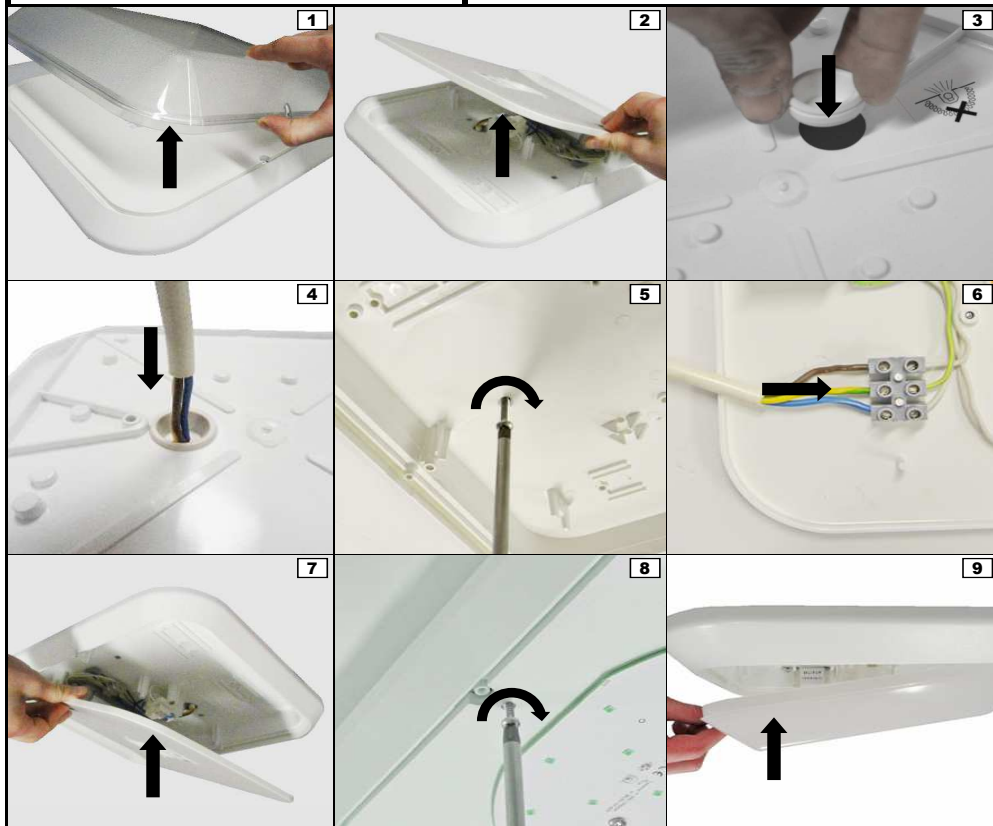


	C	A	F1	
0404	325	325	100	265 x 265



E

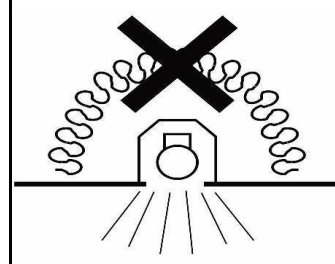


10


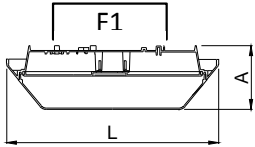
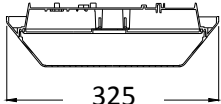
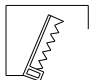


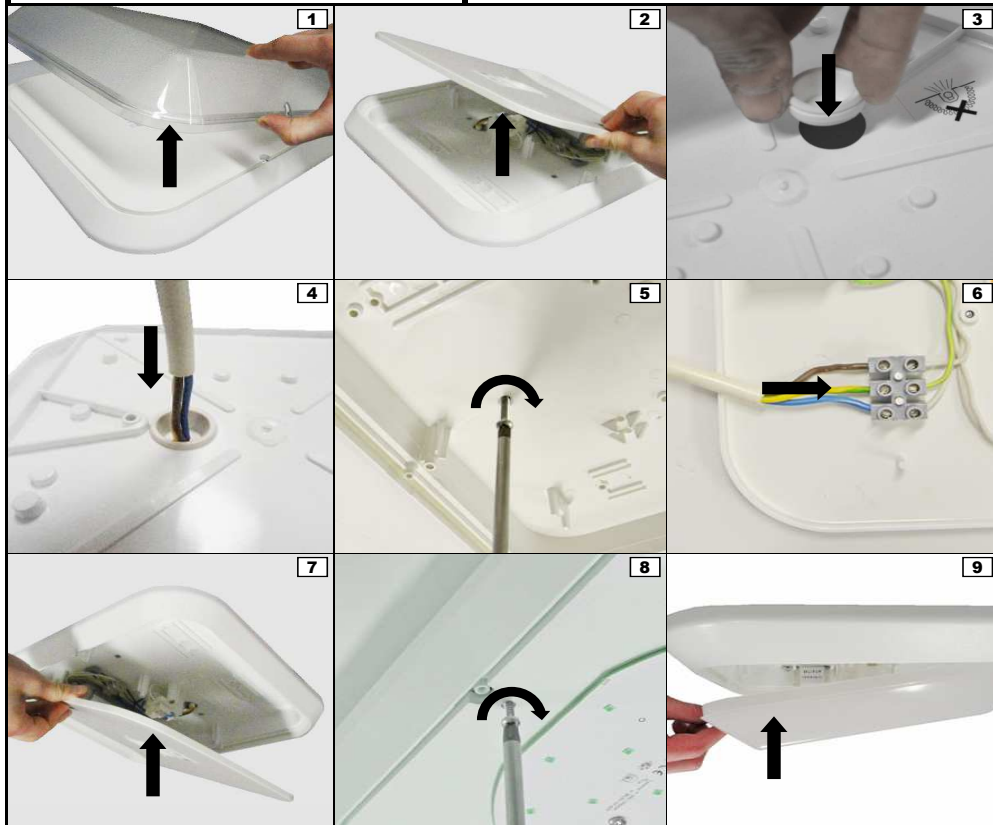
11



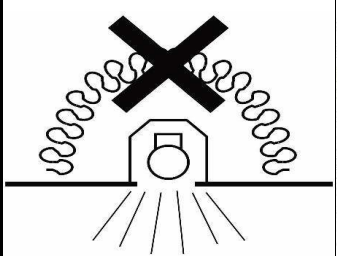
P - Não tocar diretamente no LED.
 GB - Do not touch the LED.
 F - Ne pas toucher la LED.
 E - No tocar directamente el LED.
 D - Bitte berühren die LED nicht.



P - Esta luminária não deve, em circunstância alguma, ser coberta por material isolante térmico ou semelhante.
 EN - This luminaire shall not, under no circumstances, be covered with thermal insulating matting, or similar material.
 F - Cette luminaire, en toutes circonstances, ne doit pas être recouvert avec un matériau isolant thermique, ou similaire.
 E - Esta luminaria no deve, en ninguna circunstancia, ser cubierta por material aislante térmico, o similar.
 D - Diese Leuchte soll, unter keinen Umständen, mit thermische isolierende Material oder ähnliches Material bedeckt werden.

P - Instruções de montagem		F - Instructions de montage		E - Instrucciones de montaje	
GB - Installation instructions		D - Montageanweisungen			
	C	A	F1		
0404	325	325	100	265 x 265	
   E					



P - Instruções de montagem		F - Instructions de montage		E - Instrucciones de montaje	
GB - Installation instructions		D - Montageanweisungen			
				10 11 P - Não tocar diretamente no LED. GB - Do not touch the LED. F - Ne pas toucher la LED. E - No tocar directamente el LED. D - Bitte berühren die LED nicht.	
		P - Esta luminária não deve, em circunstância alguma, ser coberta por material isolante térmico ou semelhante. EN - This luminaire shall not, under no circumstances, be covered with thermal insulating matting, or similar material. F - Cette luminaire, en toutes circonstances, ne doit pas être recouvert avec un matériau isolant thermique, ou similaire. E - Esta luminaria no deve, en ninguna circunstancia, ser cubierta por material aislante térmico, o similar. D - Diese Leuchte soll, unter keinen Umständen, mit thermische isolierende Material oder ähnliches Material bedeckt werden.			

