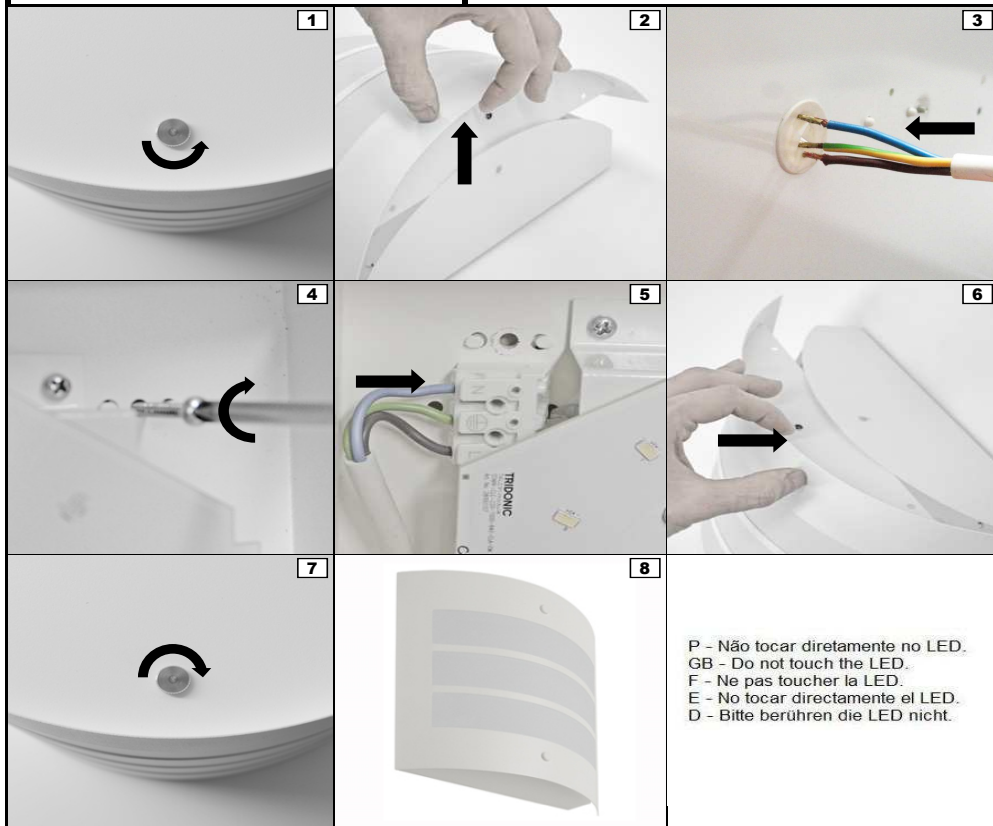
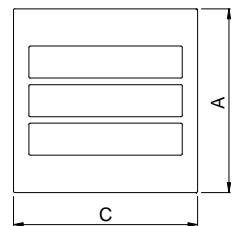
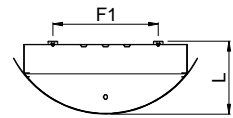
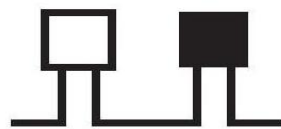


	C	L	A	F1
0302	283	110	276	166 x 168

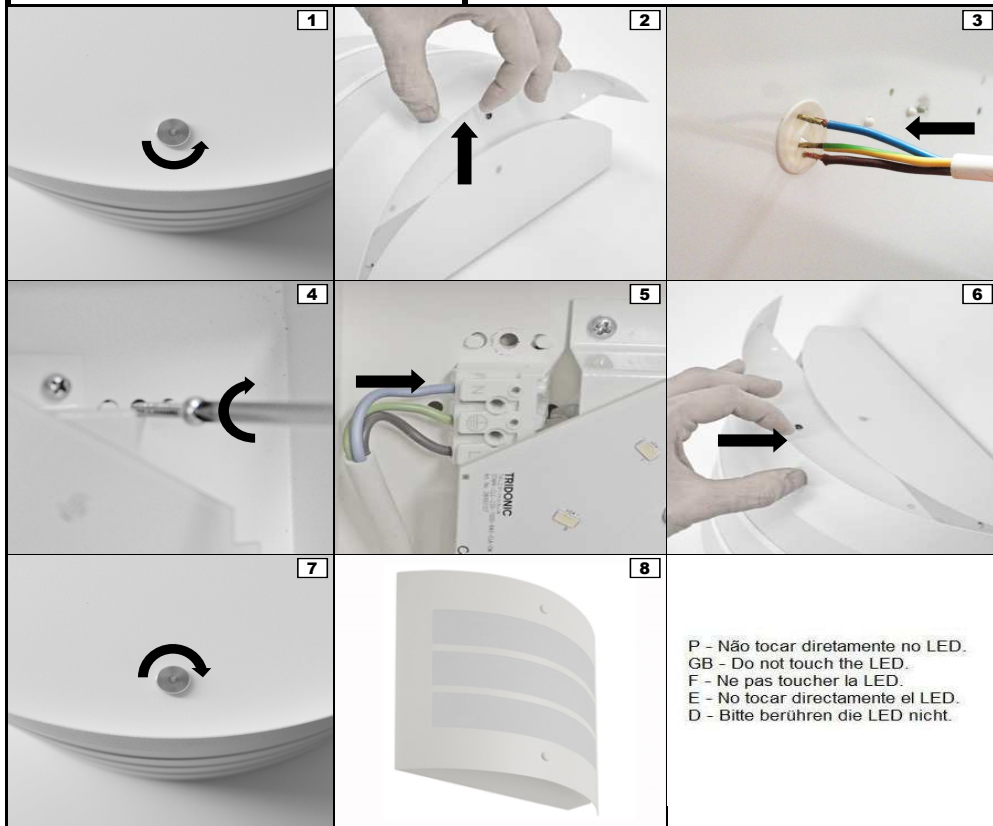
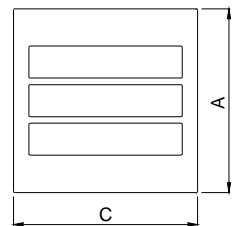
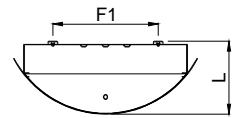


P - Não tocar diretamente no LED.
 GB - Do not touch the LED.
 F - Ne pas toucher la LED.
 E - No tocar directamente el LED.
 D - Bitte berühren die LED nicht.

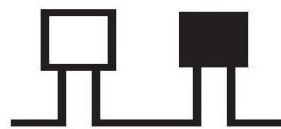


P - Esta luminária é adequada para repicagem. A corrente máxima total admissível é de 10A.
 GB - This luminaire is suitable for looping-in connection. The maximum total current in circuit is 10A.
 F - Ce luminaire est préparé pour repiquage. La courant total maximal au circuit est 10A.
 E - Esta luminaria es adecuada para interconexión. La corriente máxima total del circuito es 10A.
 D - Diese Beleuchtung ist für Loop-in Verbindung verwendbar. Der maximale zulässige totalstrom ist 10A.

	C	L	A	F1
0302	283	110	276	166 x 168



P - Não tocar diretamente no LED.
 GB - Do not touch the LED.
 F - Ne pas toucher la LED.
 E - No tocar directamente el LED.
 D - Bitte berühren die LED nicht.



P - Esta luminária é adequada para repicagem. A corrente máxima total admissível é de 10A.
 GB - This luminaire is suitable for looping-in connection. The maximum total current in circuit is 10A.
 F - Ce luminaire est préparé pour repiquage. La courant total maximal au circuit est 10A.
 E - Esta luminaria es adecuada para interconexión. La corriente máxima total del circuito es 10A.
 D - Diese Beleuchtung ist für Loop-in Verbindung verwendbar. Der maximale zulässige totalstrom ist 10A.