
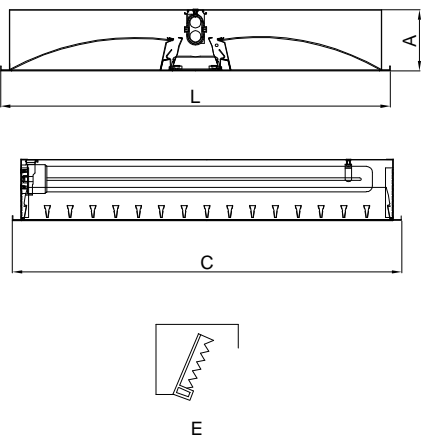
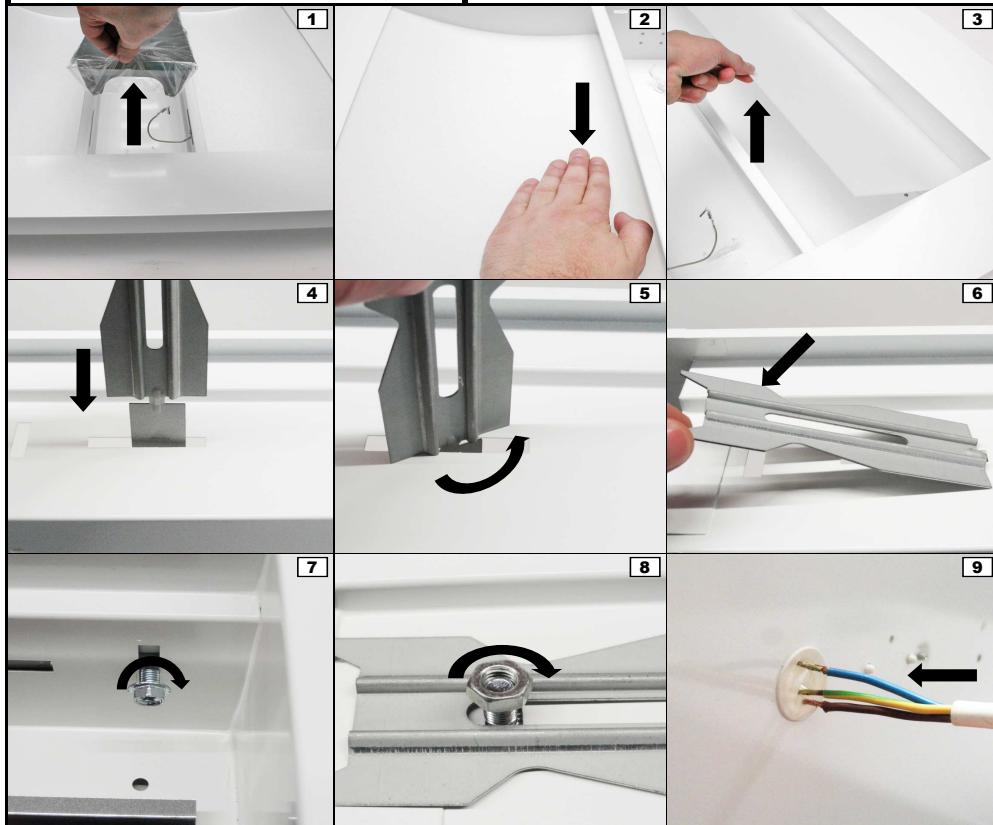
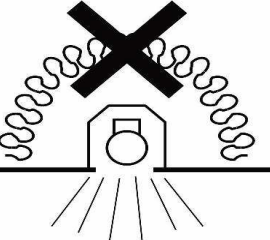
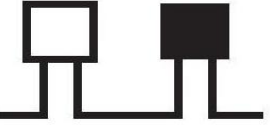


P - Instruções de montagem		F - Instructions de montage		E - Instrucciones de montaje	
GB - Installation instructions		D - Montageanweisungen			
Watt	C	L	A		
1x55	595	595	93	585 x 585	
2x14/24	595	595	93	585 x 585	
2x28/54	1195	295	93	1185 x 285	

P - Instruções de montagem GB - Installation instructions	F - Instructions de montage D - Montageanweisungen	E - Instrucciones de montaje
<p>P - Encastrar apenas no teto. GB - Recessed installation only for ceiling. F - Encastrer seulement au plafond. E - Sólo empotrada en el techo. D - Leuchte nur für deckeneinbaumontage.</p>		
	<p>P - Esta luminária não deve, em circunstância alguma, ser coberta por material isolante térmico ou semelhante. GB - This luminaire shall, under no circumstances, be covered with thermal insulating matting, or similar material. F - Cette luminaire, en toutes circonstances, ne doit pas être recouvert avec un matériau isolant thermique, ou similaire. E - Esta luminaria no deve, en ninguna circunstancia, ser cubierta por material aislante térmico, o similar. D - Diese Leuchte soll, unter keinen Umständen, mit thermische isolierende Material oder ähnliches Material bedeckt werden.</p>	
	<p>P - Esta luminária é adequada para repicagem. A corrente máxima total admissível é de 10A. GB - This luminaire is suitable for looping-in connection. The maximum total current in circuit is 10A. F - Ce luminaire est préparé pour repiquage. La courant total maximal au circuit est 10A. E - Esta luminaria es adecuada para interconexión. La corriente máxima total del circuito es 10A. D - Diese Beleuchtung ist für Loop-in Verbindung verwendbar. Der maximale zulässige totalstrom ist 10A.</p>	