
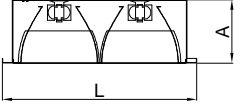
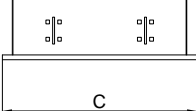
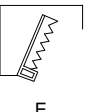
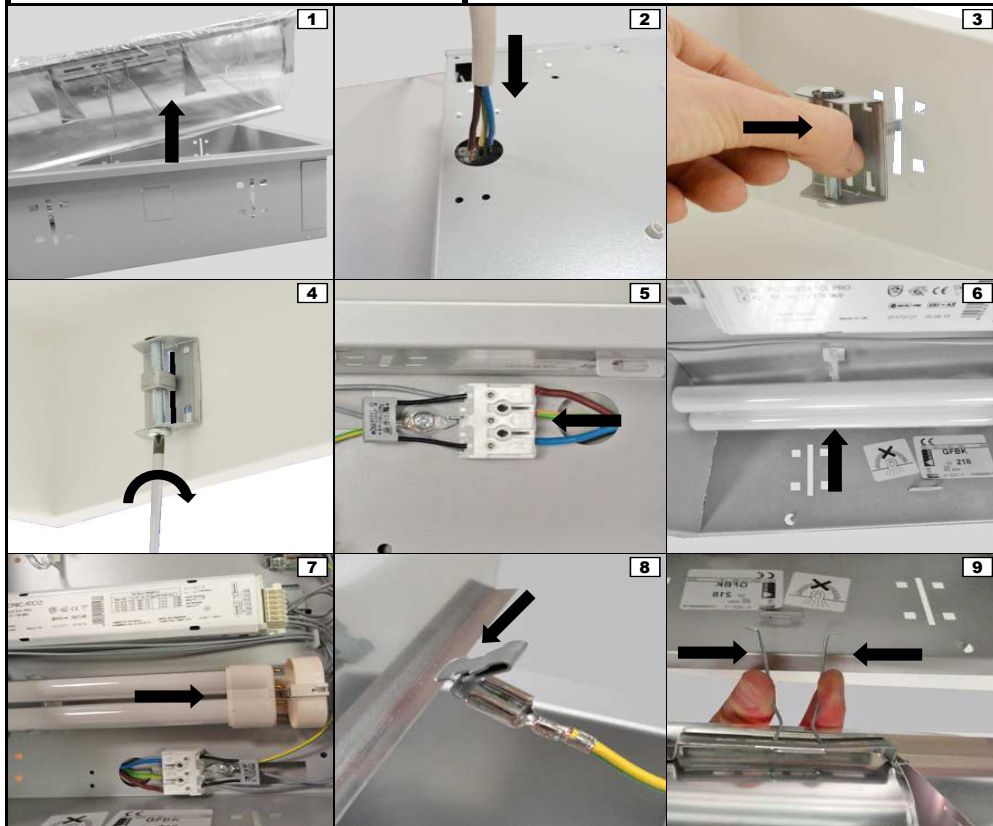
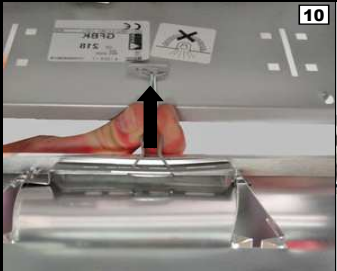



P - Instruções de montagem    F - Instructions de montage    E - Instrucciones de montaje  
 GB - Installation instructions    D - Montageanweisungen

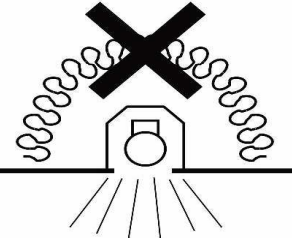
Watt	C	L	A	
2x9/18	297	297	95	278 x 278
2x36	461	461	95	441 x 441
3x24/36	461	461	95	441 x 441

P - Instruções de montagem    F - Instructions de montage    E - Instrucciones de montaje  
 GB - Installation instructions    D - Montageanweisungen






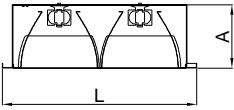
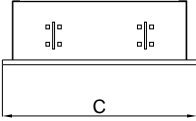



P - Esta luminária é adequada para repicagem. A corrente máxima total admissível é de 10A.  
 GB - This luminaire is suitable for looping-in connection. The maximum total current in circuit is 10A.  
 F - Ce luminaire est préparé pour repiquage. La courant total maximal au circuit est 10A.  
 E - Esta luminaria es adecuada para interconexión. La corriente máxima total del circuito es 10A.  
 D - Diese Beleuchtung ist für Loop-in Verbindung verwendbar. Der maximale zulässige totalstrom ist 10A.

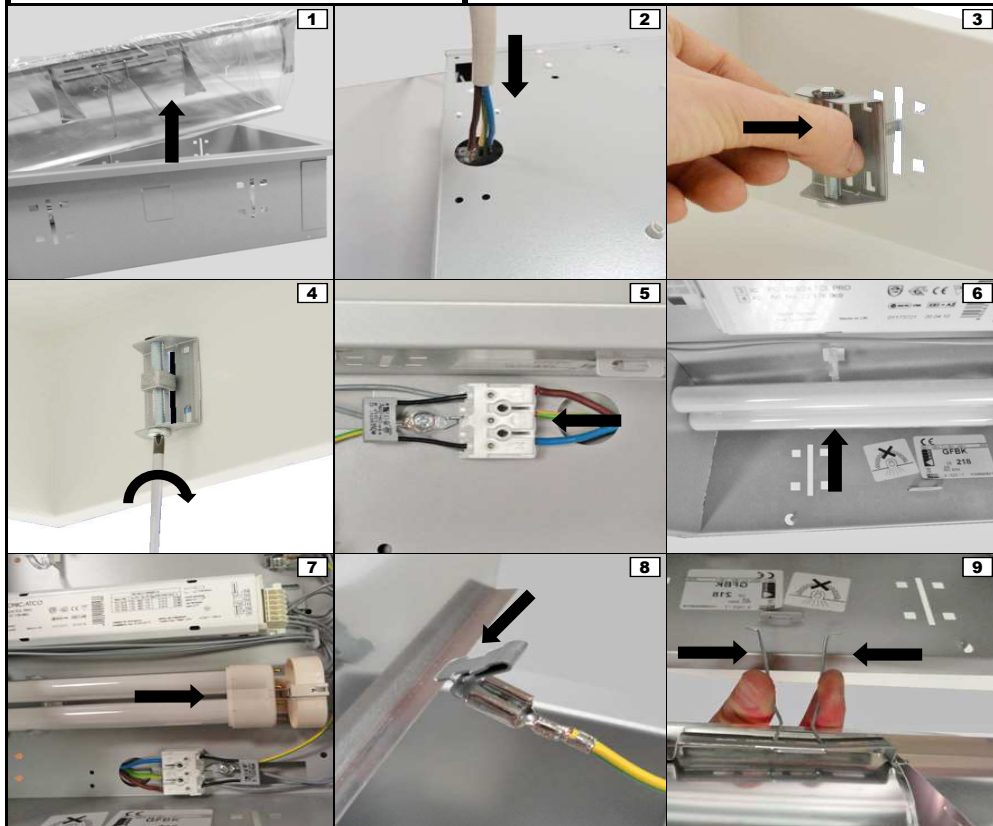
P - Esta luminária não deve, em circunstância alguma, ser coberta por material isolante térmico ou semelhante.  
 EN - This luminaire shall not, under no circumstances, be covered with thermal insulating matting, or similar material.  
 F - Cette luminaire, en toutes circonstances, ne doit pas être recouvert avec un matériau isolant thermique, ou similaire.  
 E - Esta luminaria no deve, en ninguna circunstancia, ser cubierta por material aislante térmico, o similar.  
 D - Diese Leuchte soll, unter keinen Umständen, mit thermische isolierende Material oder ähnliches Material bedeckt werden.

P - Instruções de montagem    F - Instructions de montage    E - Instrucciones de montaje  
 GB - Installation instructions    D - Montageanweisungen

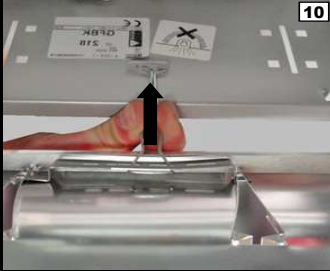
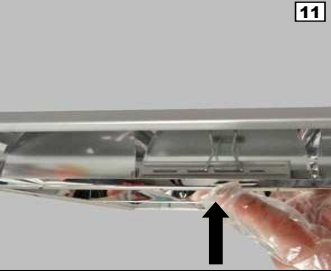

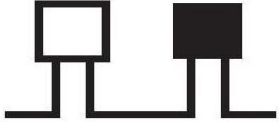
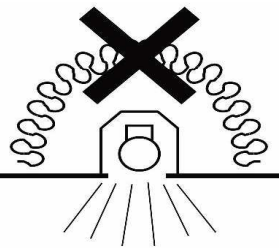
Watt	C	L	A	
2x9/18	297	297	95	278 x 278
2x36	461	461	95	441 x 441
3x24/36	461	461	95	441 x 441

E



P - Instruções de montagem    F - Instructions de montage    E - Instrucciones de montaje  
 GB - Installation instructions    D - Montageanweisungen

P - Esta luminária é adequada para repicagem. A corrente máxima total admissível é de 10A.  
 GB - This luminaire is suitable for looping-in connection. The maximum total current in circuit is 10A.  
 F - Ce luminaire est préparé pour repiquage. La courant total maximal au circuit est 10A.  
 E - Esta luminaria es adecuada para interconexión. La corriente máxima total del circuito es 10A.  
 D - Diese Beleuchtung ist für Loop-in Verbindung verwendbar. Der maximale zulässige totalstrom ist 10A.

P - Esta luminária não deve, em circunstância alguma, ser coberta por material isolante térmico ou semelhante.  
 EN - This luminaire shall not, under no circumstances, be covered with thermal insulating matting, or similar material.  
 F - Cette luminaire, en toutes circonstances, ne doit pas être recouvert avec un matériau isolant thermique, ou similaire.  
 E - Esta luminaria no deve, en ninguna circunstancia, ser cubierta por material aislante térmico, o similar.  
 D - Diese Leuchte soll, unter keinen Umständen, mit thermische isolierende Material oder ähnliches Material bedeckt werden.